

# BOL SERIES Outdoor Lighting

BOL-505-26-MCT-BK  
BOL-505-26-MCT-BR  
RECTANGULAR PATH-LIGHT BOLLARD, 3 CCT, 4-3/4 X 3-3/8"

**MCTP** Multi Color Temperature & Multi Power/Wattage (Selectable)

Customer Name: \_\_\_\_\_

Project Name: \_\_\_\_\_

Note: \_\_\_\_\_

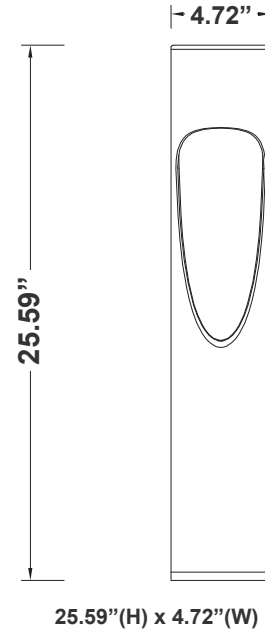
Type: \_\_\_\_\_



Avail Finishes:



Bollards are designed for walkways, entrance ways, drives and other small-area lighting applications where low mounting heights are desirable



## Features

- Corrosion Resistant Aluminum for Exterior
- Wattage & CCT Selectable Switches inside fixture
- 7-Year Warranty

## Technical Specifications

### Electrical:

- Voltage: 120-277V AC
- Wattage: 15W
- Power Factor: >0.9
- Efficacy: 100LM/W

### Mechanical:

- Corrosion Resistant Aluminum for Exterior
- Anchor bolt and accessories are NOT included - see the accessories
- Operating Temperature: -40°F to 122°F
- IP Rating: IP65, Wet Locations
- 7 Years Warranty

### Lighting:

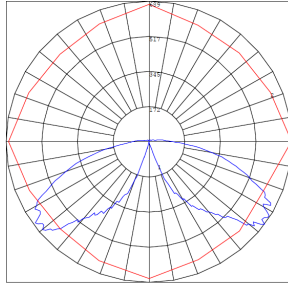
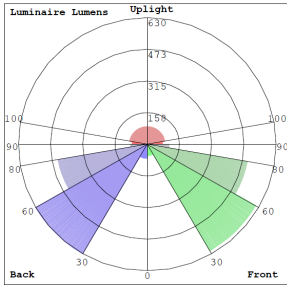
- Multi CCT Selectable Switches inside fixture
- Lumens: 1500LM Max.
- Color Temperatures: 3000K/4000K/5000K
- Color Rendering Index: CRI ≥ 80
- Beam Angle : 360°
- Lifespan: 70000 Hours

### Applications:

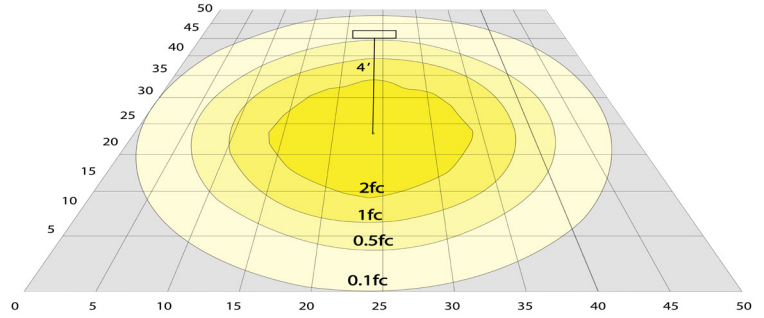
- Bollards are designed for walkways, entrance ways, drives and other small-area lighting applications where low mounting heights are desirable



## Photometrics: BOL-505-26-MCT



BUD Rating: B1-U3-G2



Area 75'x 65' Mounting Height: 4'

## Performance Table: BOL-502-32-MCT

MODEL NO.	Wattage	Voltage	Lumens	Color Temp.	BUG Rating	LPW
BOL-505-26-MCT-BK BOL-505-26-MCT-BR	15W	120~277V	1500LM	3000K 4000K 5000K	B1-U3-G2	100

## Sample Ordering

**Model**    **Style**    **Size**    **Color Temp.**    **Housing**  
 -  -  -  -

BK= Black  
BR= Bronze

### Accessories:

Blank = No Option For Accessories  
BOL-505-ABK = BOL-505 Series Anchor Bolt Kit

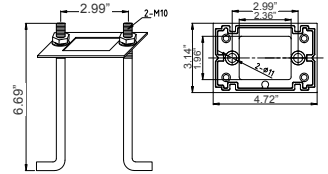
### Factory-Installed Options:

Blank = No Option For Accessories  
OPT-EM-OD1INT = Emergency Backup Internal Battery, Back Box  
OPT-CRL-95(BK/GR/SR/WH) = Paint  
OPT-SEN-WMC = Microwave Bi-Level Sensor

### ACCESSORIES:



BOL-505-ABK



BOL-505-ABK  
6.69"(H) x 2.99"(W)

### FACTORY-INSTALLED OPTION:



OPT-EM-OD1INT  
INTERNAL BATTERY



OPT-SEN-WMC  
MICROWAVE BI-LEVEL SENSOR



OPT-PC-B  
FOR 120V-277V PHOTOCELL

